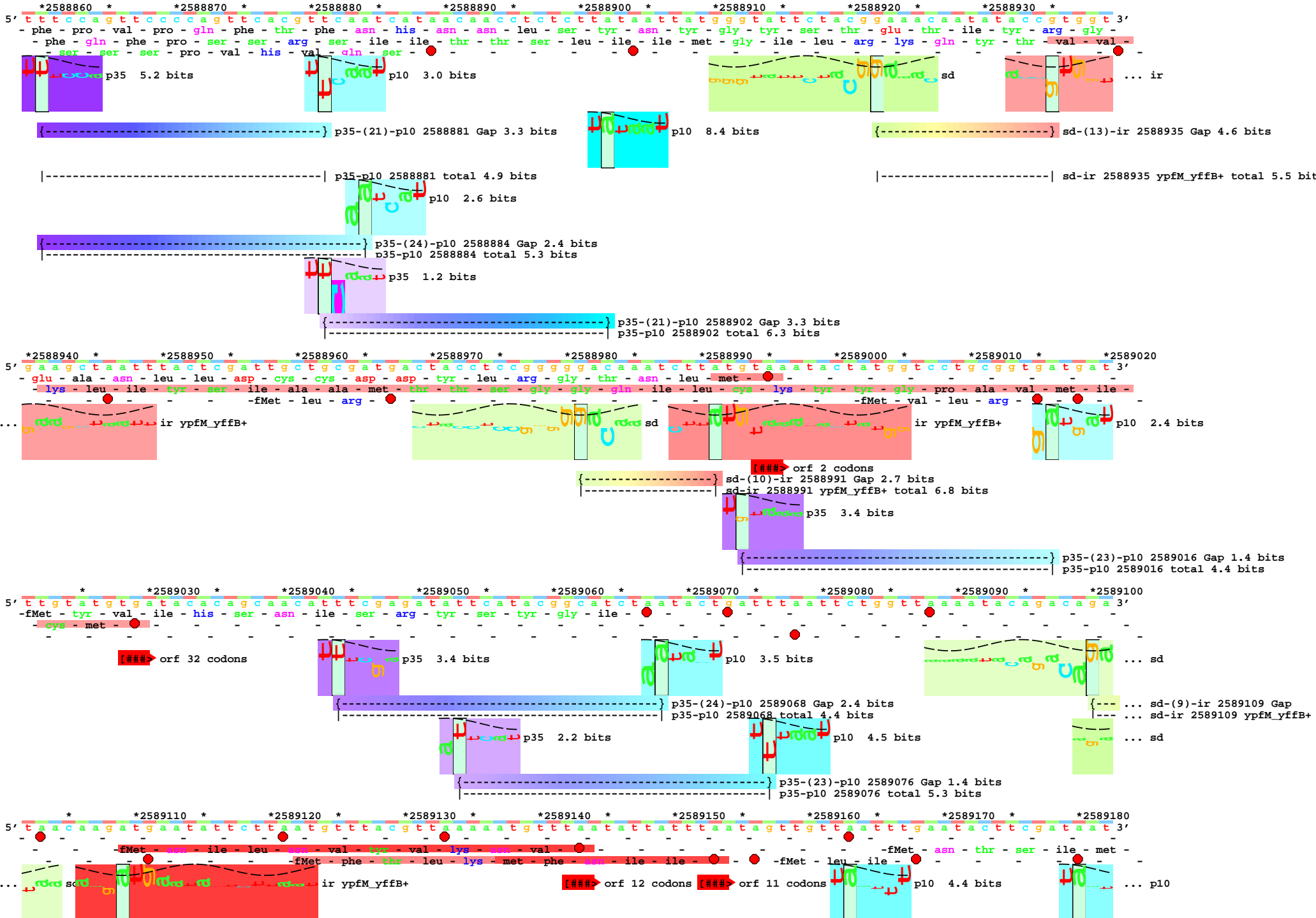
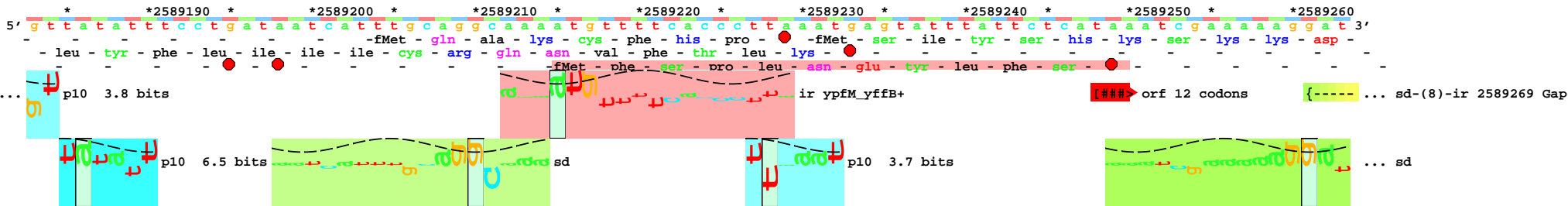
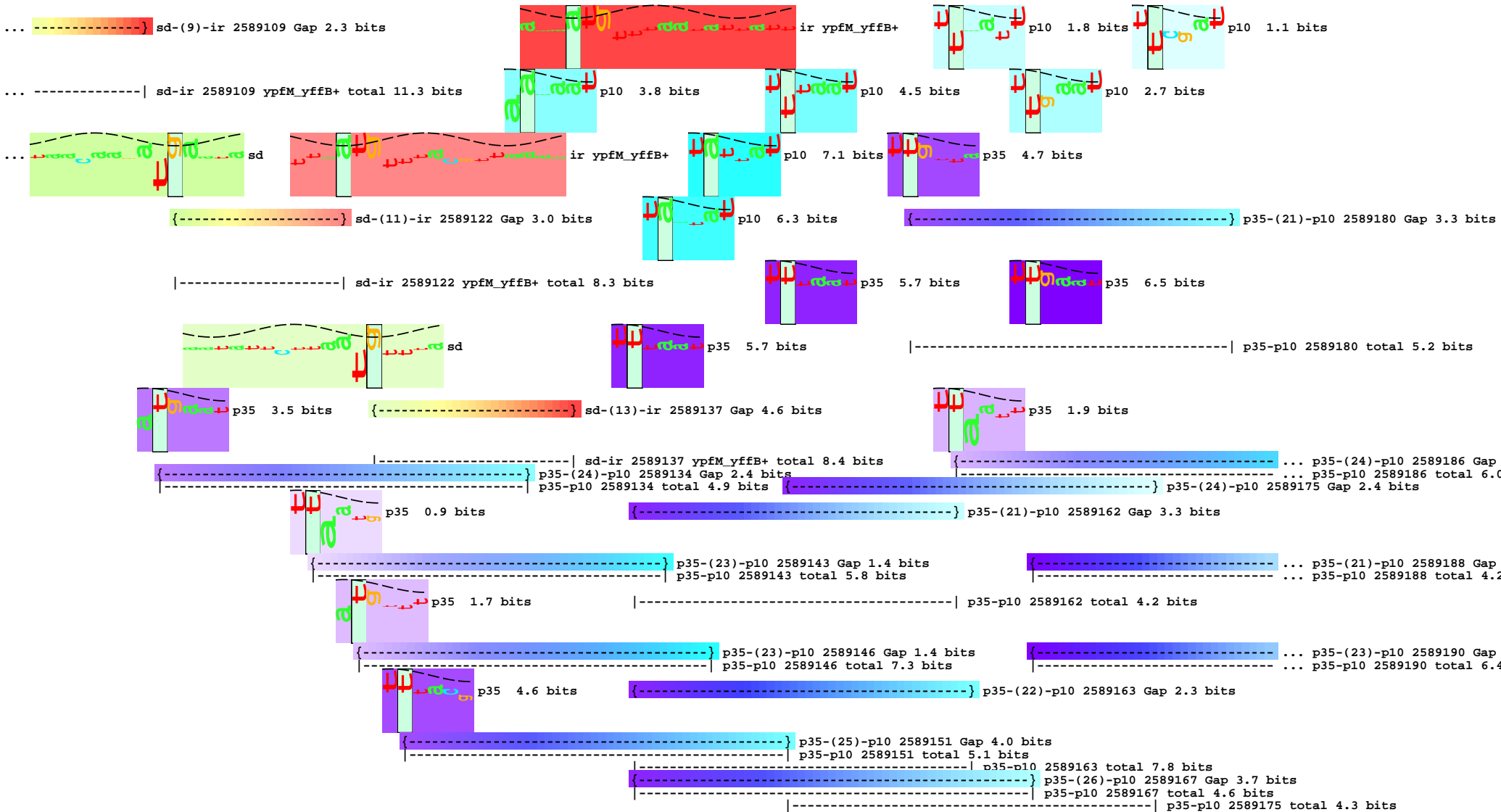


piece 1, NC_000913, ypfM_yffB+, config: linear, direction: +, begin: 2588859, end: 2589288





p10 0.9 bits

{-----} sd-(5)-ir 2589215 Gap 5.4 bits

p10 6.0 bits

|----- ... sd-ir 2589269 ypfM_yffb+

p10 1.3 bits

|-----| sd-ir 2589215 ypfM_yffb+ total 5.1 bits

p35 5.3 bits

p10 4.7 bits

} p35-(22)-p10 2589212 Gap 2.3 bits
} p35-p10 2589212 total 7.7 bits

p35 5.2 bits

p35 4.6 bits

... } p35-(24)-p10 2589186 Gap 2.4 bits
... } p35-p10 2589186 total 6.0 bits

{-----} p35-(23)-p10 2589228 Gap 1.4 bits
p35-p10 2589228 total 7.4 bits

{-----} p35-(22)-p10 2589241 Gap 2.3 bits
p35-p10 2589241 total 8.3 bits

... } p35-(21)-p10 2589188 Gap 3.3 bits
... } p35-p10 2589188 total 4.2 bits

... } p35-(23)-p10 2589190 Gap 1.4 bits
... } p35-p10 2589190 total 6.4 bits

* 2589270 * 2589280 *
5' t c a t t a t g g t t a c a c t t t a c g g t a t 3'
- ser - leu - trp - leu - his - phe - thr - val -

- fMet - val - thr - leu - tyr - gly -

... } sd-(8)-ir 2589269 Gap 2.4 bits

sd [----- ... NC_000913.yffb

... } sd-ir 2589269 ypfM_yffb+ total 13.8 bits

ir ypfM_yffb+