

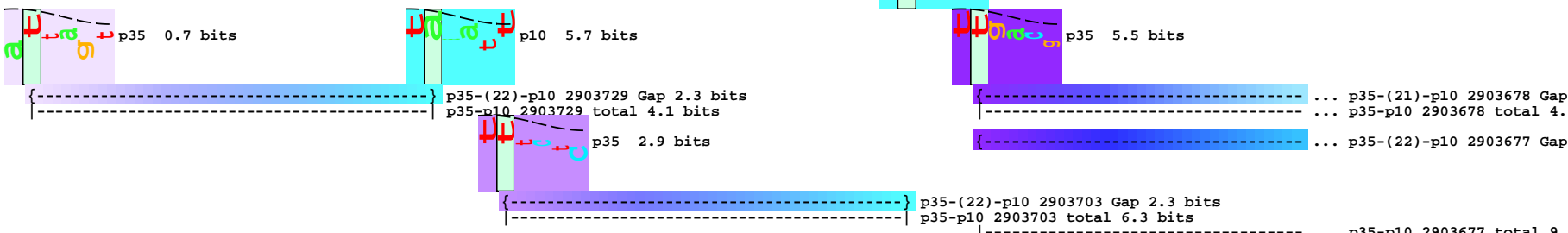
piece 1, NC\_000913, ygcF\_ygcG-, config: linear, direction: -, begin: 2903762, end: 2903421

5' <sup>\*2903760 \*</sup> g a a a g t g a a c a t t a g t a t g a a a t a g c g c a t t a t a a a a t t t c t c a t t a a a t c t g g a t a a a t a a a t t g a c g g c g g c a t c g g t a a 3'

- glu - ser - glu - his - ser - met - lys - fMet - thr - ala - ala - ser - val - ile -

- lys - val - asn - ile -

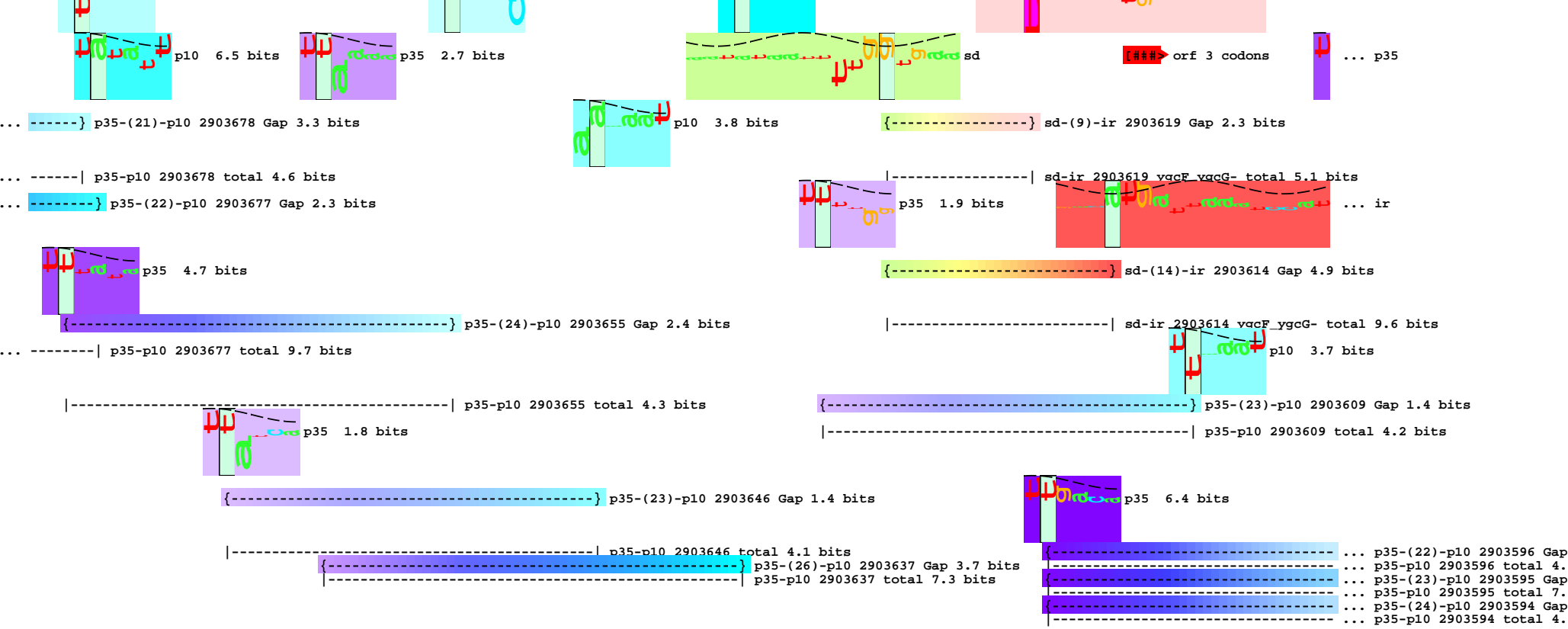
... -----] NC\_000913.ygcG

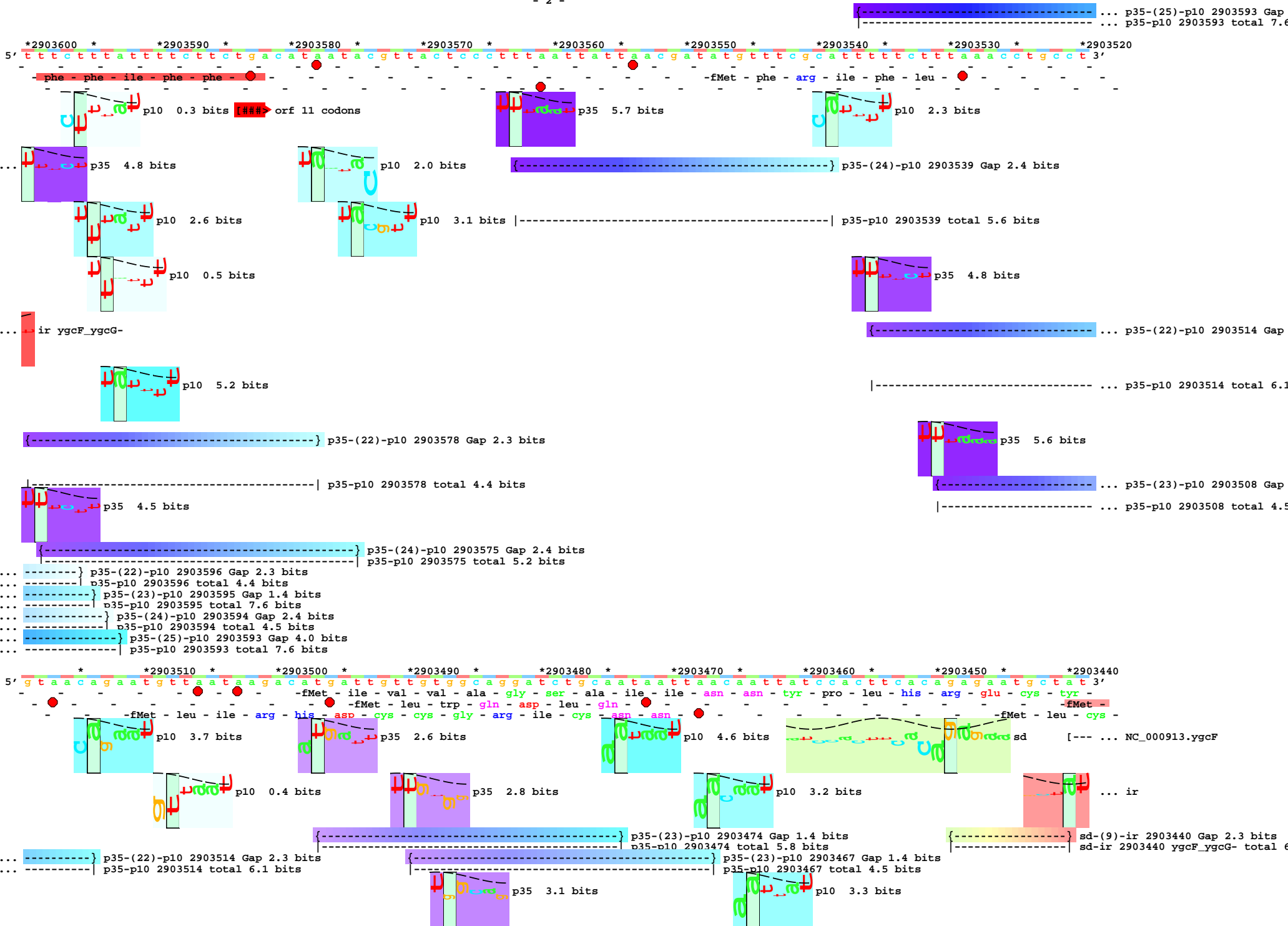


5' <sup>\*2903680 \*</sup> t t t t a t a t t c g t t a t c a t t a a a a a c t a a t a c a g a a a a a a t a a a t a t a a t t t t g g t g a a t g t t t t g a c a t g a t t a a a t c c a t 3'

- leu - tvr - ser - leu - ser - leu - lys - thr - asn - thr - glu - lys - ile - asn - ile - ile - leu - val - asn - val - leu - thr - fMet - ile - lys - ser - ile -

- phe -





... } p35-(23)-p10 2903508 Gap 1.4 bits  
... } p35-p10 2903508 total 4.5 bits

{ p35-(23)-p10 2903464 Gap 1.4 bits  
{ p35-p10 2903464 total 4.9 bits

\* \*2903430 \*  
5' g c a g t a c c c g a t t a a c g a 3'  
- ala - val - pro - asp - - -  
- gln - tyr - pro - ile - asn -  
- ser - thr - arg - leu - thr -

... NC\_000913.ygcF

... ir ygcF\_ygcG-

