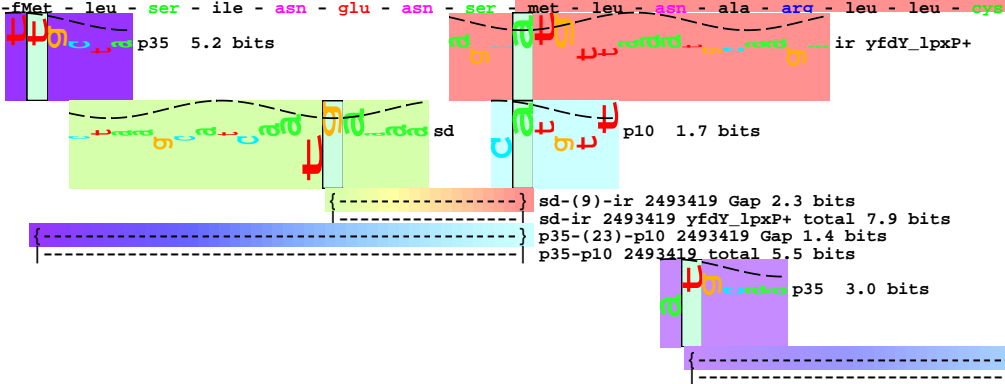
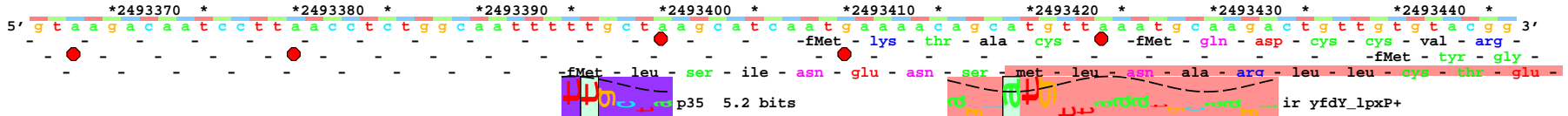
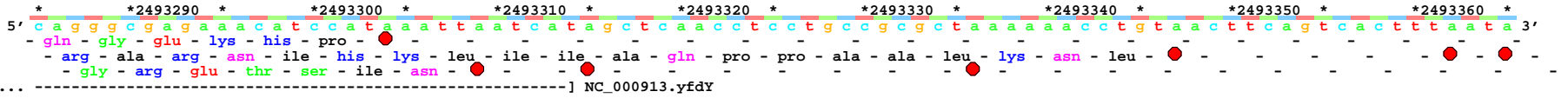


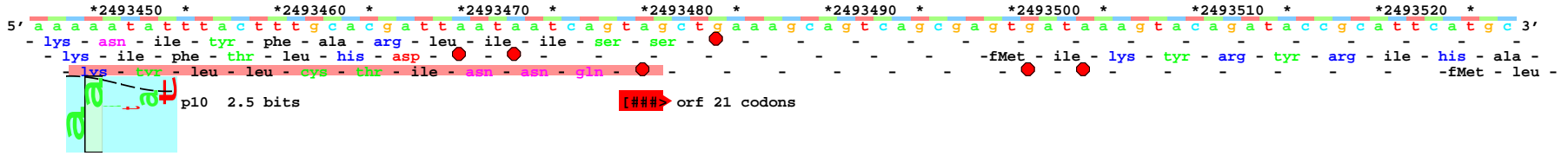
piece 1, NC_000913, yfdY_lpxP+, config: linear, direction: +, begin: 2493285, end: 2493686



sd-(9)-ir 2493419 Gap 2.3 bits
 sd-ir 2493419 yfdY_lpxP+ total 7.9 bits
 p35-(23)-p10 2493419 Gap 1.4 bits
 p35-p10 2493419 total 5.5 bits

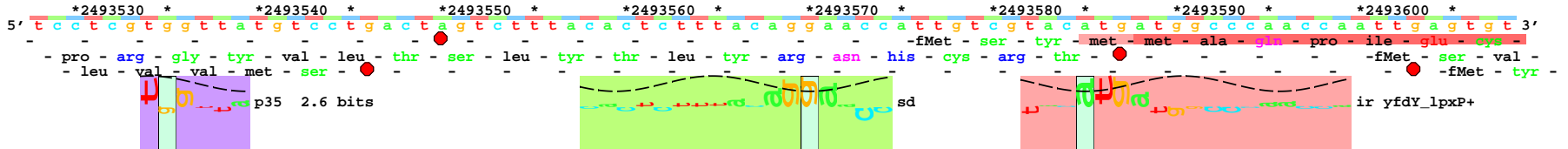
p35 3.0 bits

... p35-(23)-p10 2493450 Gap
 ... p35-p10 2493450 total 4.1



p10 2.5 bits

... p35-(23)-p10 2493450 Gap 1.4 bits
 ... p35-p10 2493450 total 4.1 bits



p35 2.6 bits

p10 5.8 bits sd-(15)-ir 2493585 Gap 6.0 bits ... p35-(23)-p10 2493625 Gap

sd-ir 2493585 yfdY_lpxP+ total 5.5 bits

p35-(22)-p10 2493557 Gap 2.3 bits

sd-(18)-ir 2493588 Gap 6.9 bits
 sd-ir 2493588 yfdY_lpxP+ total 8.0 bits

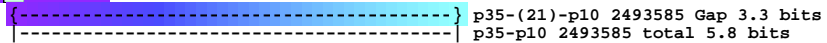
p35-p10 2493557 total 6.1 bits

p10 3.6 bits

p35 4.7 bits



|----- ... p35-p10 2493625 total 4.4



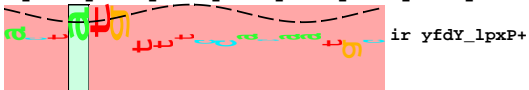
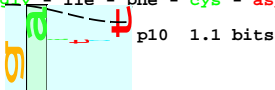
*2493610 * *2493620 * *2493630 * *2493640 * *2493650 * *2493660 * *2493670 * *2493680 *

5' a c c g c t g t c g a c a t g g a a t c t t c t g c g a t a c a a c a a t t c g t a t c t a c a g a a g g t a a c t a t g t t t c c a c a a t g c a a a t t 3'

- thr - ala - val - asp - met - glu - ser - ser - ala - ile - gln - gln - phe - val - ser - thr - glu - gly - asn - tyr - val - ser - thr - met - gln - ile -

- pro - leu - ser - thr - trp - asn - leu - leu - arg - tyr - asn - asn - ser - tyr - leu - gln - lys - val - thr - met - phe - pro - gln - cys - lys -

- arg - cys - arg - his - gly - ile - phe - cys - asp - thr - thr - ile - arg - ile - tyr - arg - arg -



... } p35-(23)-p10 2493625 Gap 1.4 bits



{-----} sd-(6)-ir 2493667 Gap 4.3 bits
 |-----| sd-ir 2493667 yfdY_lpxP+ total 7.0 bits

... -----| p35-p10 2493625 total 4.4 bits