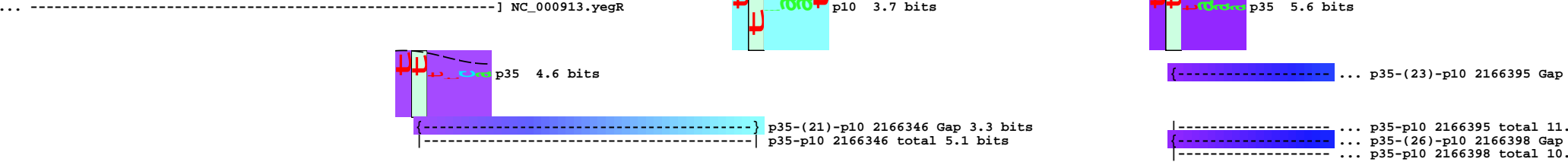


piece 1, NC\_000913, yegR\_yegS+, config: linear, direction: +, begin: 2166301, end: 2166755

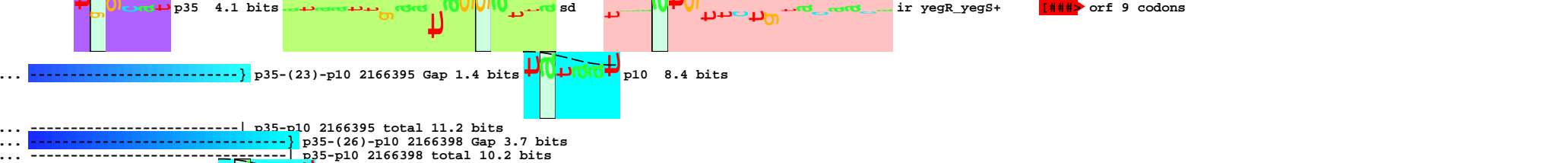
5' <sup>\*</sup> a a t t a a t g a t a t a g c a g c t a t c t t t t t t c a t c t c a c c t t c c c c a t t t a a a t a c c a a c g a c a c t c t c t a g t g t t t a a a t a a 3' <sup>\*</sup> \*2166310 \* \*2166320 \* \*2166330 \* \*2166340 \* \*2166350 \* \*2166360 \* \*2166370 \* \*2166380

- ile - asn - asp - ile - ala - ala - ile - phe - phe - ile - ser - pro - ser - pro - ile - lys - tyr - gln - arg - his - ser - leu - val - phe - lys - tyr - asn -  
 - leu - met - ile -



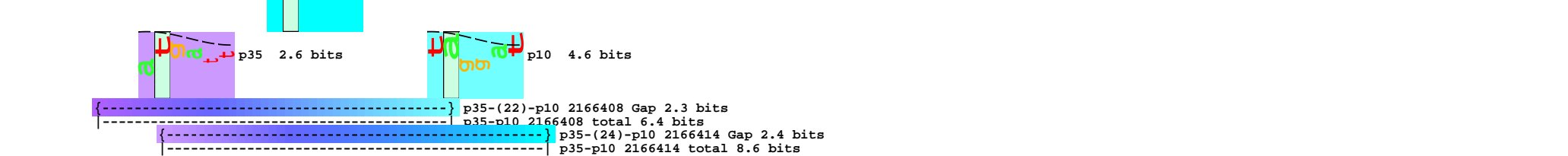
5' <sup>\*</sup> t a a t g g c a t g a t t a t t a t a a t t g a a t a g g a t t a t a a t a a a t g t t c t g t a c a a c a t t t c c t a c a t a a g t a g g a a t t a c g g a c 3' <sup>\*</sup> \*2166390 \* \*2166400 \* \*2166410 \* \*2166420 \* \*2166430 \* \*2166440 \* \*2166450 \* \*2166460

- asn - gly - met - ile - ile - ile - ile - glu - fMet - phe - cys - thr - thr - phe - pro - thr -  
 - fMet - ala - - fMet - asn - arg - ile - ile - ile - asn - val - leu - tyr - asn - ile - ser - tyr - ile - ser - arg - asn - tyr - gly - his -



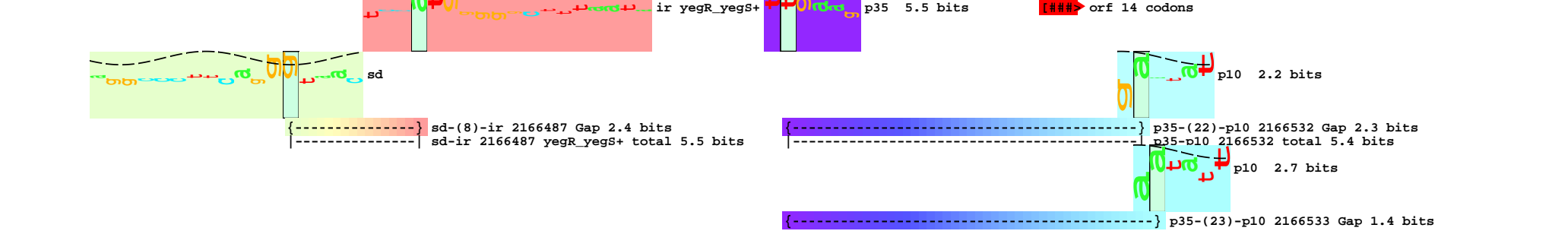
5' <sup>\*</sup> a t t g a g g c c c t t c a g g g t a a c t c c a t g g g g g c t t t a a t a t a t a t t g a a g a t g c c a c t g t t t a g t t g a a t a t t a g g t a t 3' <sup>\*</sup> \*2166470 \* \*2166480 \* \*2166490 \* \*2166500 \* \*2166510 \* \*2166520 \* \*2166530 \* \*2166540

- fMet - arg - pro - phe - arg - val - thr - pro - trp - gly - leu - - - fMet - lys - met - pro - leu - phe - ser - - - fMet - asn - ile - arg - tyr -



5' <sup>\*</sup> a t t g a g g c c c t t c a g g g t a a c t c c a t g g g g g c t t t a a t a t a t a t t g a a g a t g c c a c t g t t t a g t t g a a t a t t a g g t a t 3' <sup>\*</sup> \*2166470 \* \*2166480 \* \*2166490 \* \*2166500 \* \*2166510 \* \*2166520 \* \*2166530 \* \*2166540

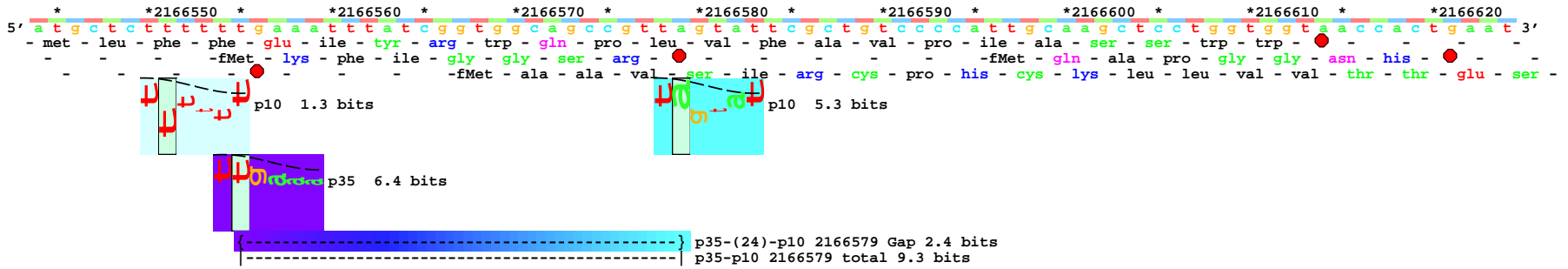
- fMet - arg - pro - phe - arg - val - thr - pro - trp - gly - leu - - - fMet - lys - met - pro - leu - phe - ser - - - fMet - asn - ile - arg - tyr -



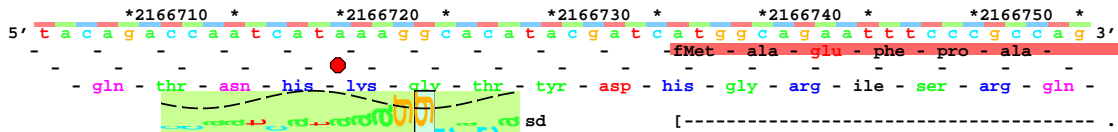
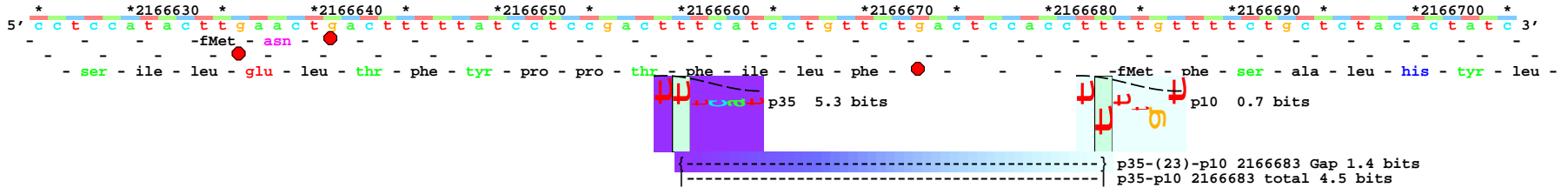
-----| p35-p10 2166533 total 6.8 bits

p35 6.5 bits

... p35-(21)-p10 2166551 Gap  
... p35-p10 2166551 total 4.5



... p35-(21)-p10 2166551 Gap 3.3 bits  
... p35-p10 2166551 total 4.5 bits



[-----] ... NC\_000913.yegS

sd-(12)-ir 2166736 Gap 4.0 bits  
sd-ir 2166736 yegR\_yegS+ total 9.9 bits