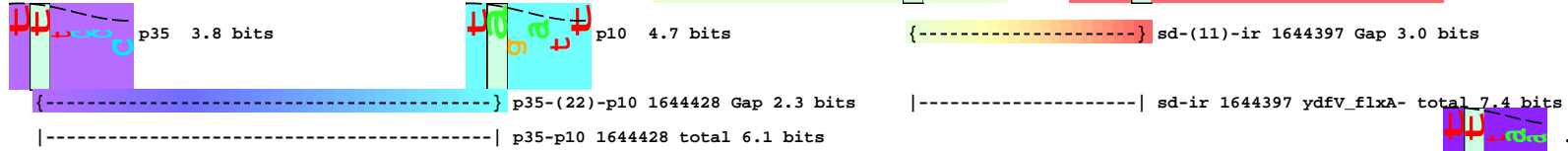
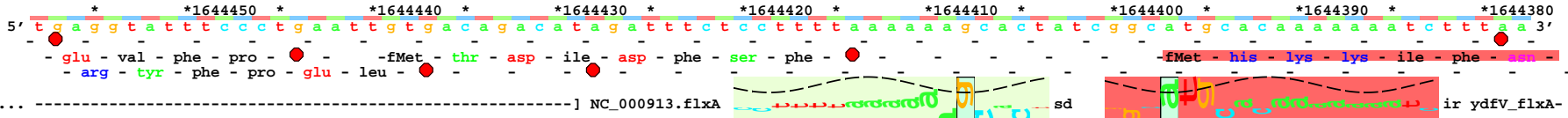


piece 1, NC_000913, ydFV_flxA-, config: linear, direction: -, begin: 1644458, end: 1644207



{-----} sd-(11)-ir 1644397 Gap 3.0 bits

|-----| sd-ir 1644397 ydFV_flxA- total 7.4 bits

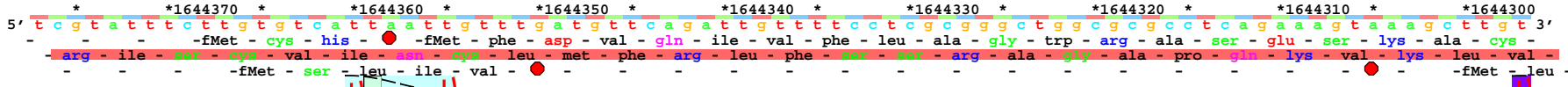
... p35

... p35-(22)-p10 1644359 Gap

... p35-p10 1644359 total 5.2

... p35-(24)-p10 1644357 Gap

... p35-p10 1644357 total 4.0



p10 1.8 bits

p10 0.8 bits

... p35

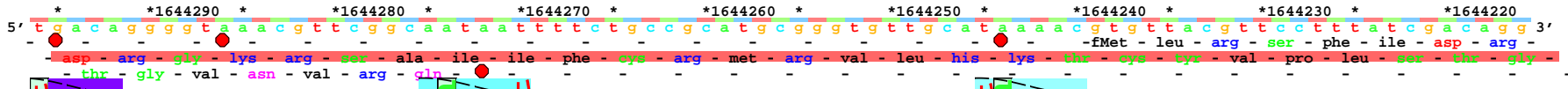
p35 5.7 bits

p35-(22)-p10 1644359 Gap 2.3 bits

p35-p10 1644359 total 5.2 bits

p35-(24)-p10 1644357 Gap 2.4 bits

p35-p10 1644357 total 4.0 bits



p35 6.4 bits

p10 4.6 bits

p10 3.3 bits

<----- ... NC_000913.ydFV

p35-(22)-p10 1644274 Gap 2.3 bits

p35 6.2 bits

p10 0.3 bits

p35-p10 1644274 total 8.7 bits

p35-(22)-p10 1644227 Gap 2.3 bits

p10 4.4 bits

p35-p10 1644227 total 4.1 bits

p35-(24)-p10 1644272 Gap 2.4 bits

p35-p10 1644272 total 8.4 bits

p35 3.5 bits

{-----} p35-(24)-p10 1644244 Gap 2.4 bits
|-----| p35-p10 1644244 total 4.3 bits

*1644210
5' t c a g g t c a c 3'
- ser - gly - his -
- gln - val -
... ----- ... NC_000913.ydfv