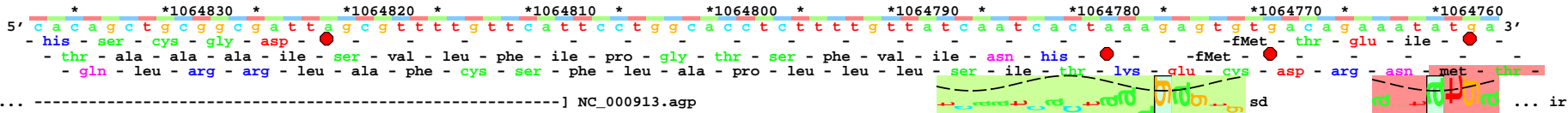


piece 1, NC\_000913, yccE\_agp-, config: linear, direction: -, begin: 1064837, end: 1064496



sd-(15)-ir 1064760 Gap 6.0 bits  
sd-ir 1064760 yccE\_agp- total 5.4 bits



p35 3.9 bits

p35 5.0 bits

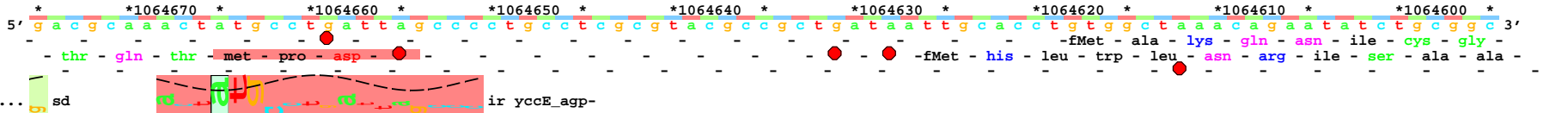
p10 1.6 bits

sd-(14)-ir 1064665 Gap

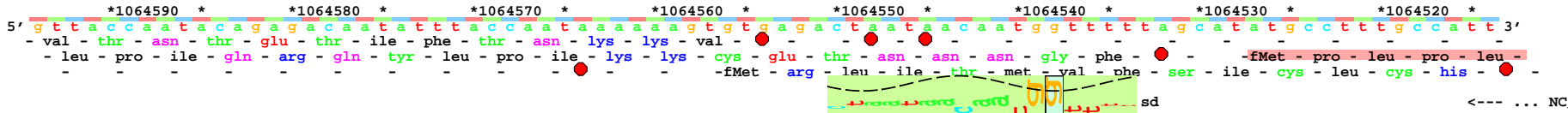
p35-(21)-p10 1064733 Gap 3.3 bits  
p35-p10 1064733 total 5.4 bits

p35-(23)-p10 1064698 Gap 1.4 bits  
p35-p10 1064698 total 5.1 bits

sd-ir 1064665 yccE\_agp- t



sd-(14)-ir 1064665 Gap 4.9 bits  
sd-ir 1064665 yccE\_agp- total 5.7 bits



NC\_000913.yccE

sd-(11)-ir 1064527 Gap 3.0 bits  
sd-ir 1064527 yccE\_agp- total 6.8 bits

p35 3.8 bits

p10


p35-(22)-p10 1064514 Gap 2.3 bits  
p35-p10 1064514 total 5.2 bits


p10

p35-(23)-p10 1064513 Gap  
p35-p10 1064513 total 8.1 bits

\*1064510 \* \*1064500  
5' a a a t t g c a t a a c g a t t t a 3'  
-fMet - his - asn - asp - leu -  
- asn - cys - ile - thr - ile -  
...----- NC\_000913.yccE

... ir yccE\_agg-

...  p10 3.7 bits

...  p10 5.7 bits

... } p35-(23)-p10 1064513 Gap 1.4 bits  
... | p35-p10 1064513 total 8.1 bits