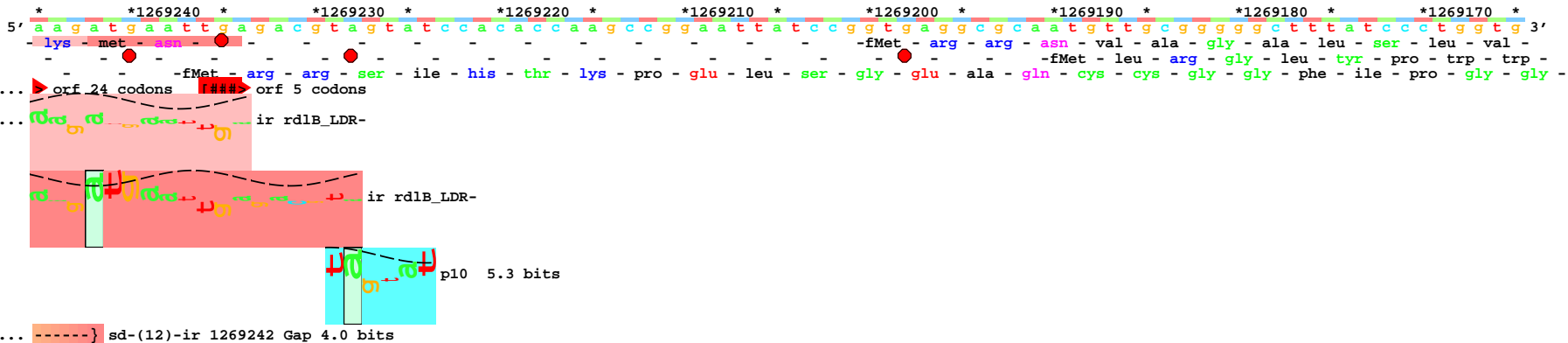
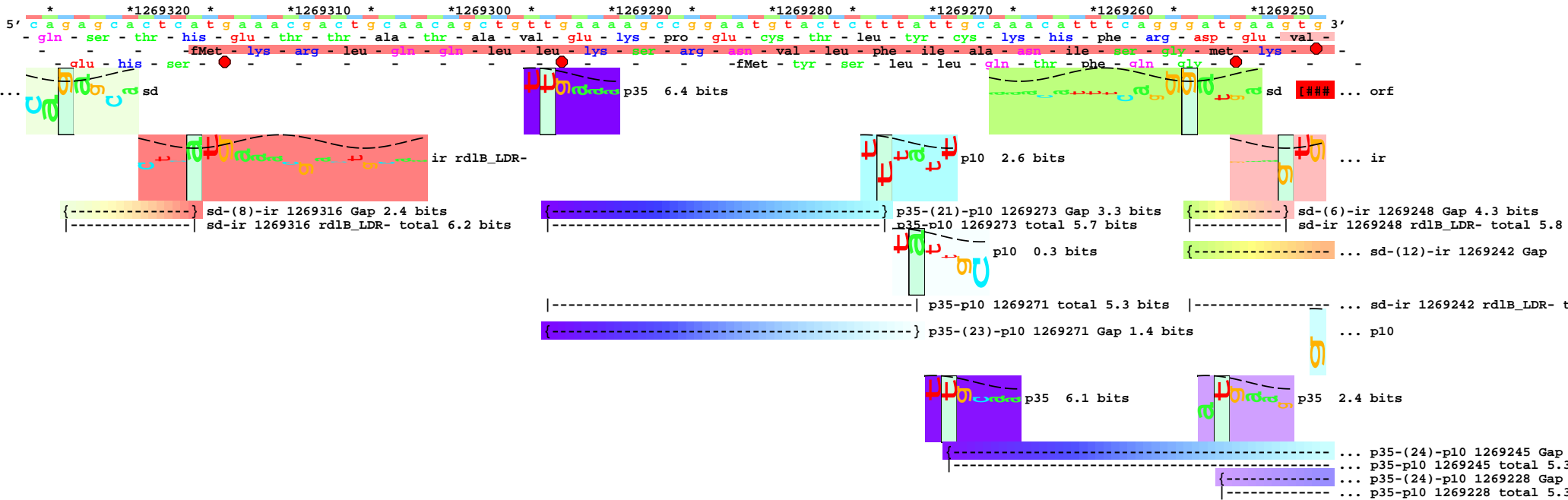
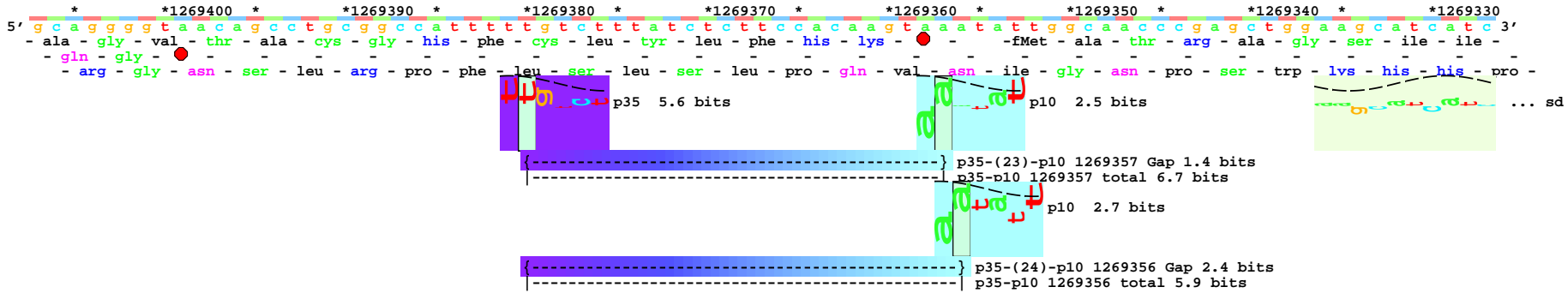


piece 1, NC_000913, rdlB_LDR-, config: linear, direction: -, begin: 1269407, end: 1269127



... -----| sd-ir 1269242 rd1B_LDR- total 9.2 bits

... p10 1.6 bits

... } p35-(24)-p10 1269245 Gap 2.4 bits

... | p35-p10 1269245 total 5.3 bits

... p35-(24)-p10 1269228 Gap 2.4 bits

... -----| p35-p10 1269228 total 5.3 bits

*1269160 * *1269150 * *1269140 * *1269130
 5' g c a t t g g t t g c t g g a a a g a g a a a a c c c c c g c a c g t t g a 3'
 - ala - leu - val - ala - gly - lys - arg - lys - pro - pro - his - val -
 - his - trp - leu - leu - glu - arg - glu - asn - pro - arg - thr - leu -
 - ile - gly - cys - trp - lys - glu - lys - thr - pro - ala - arg - ● -