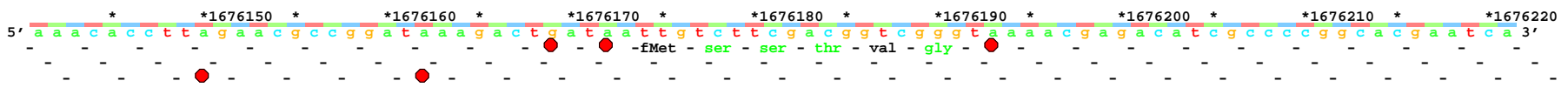
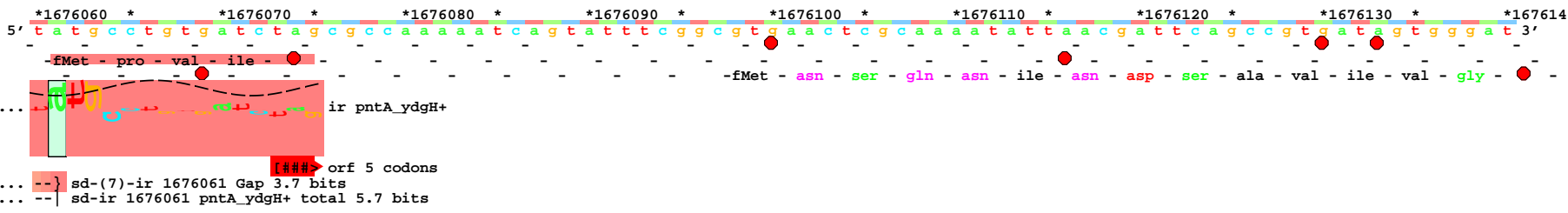
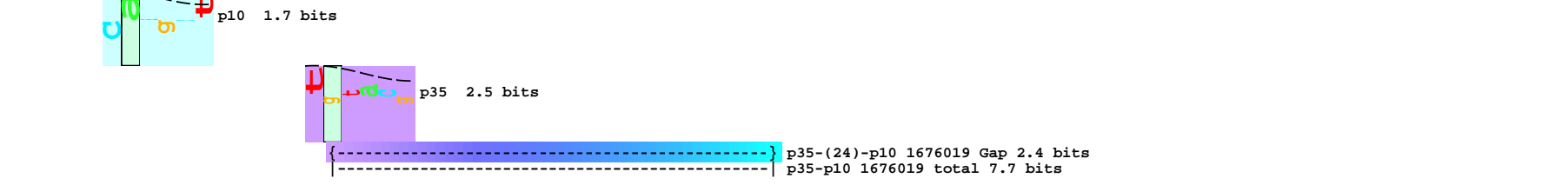
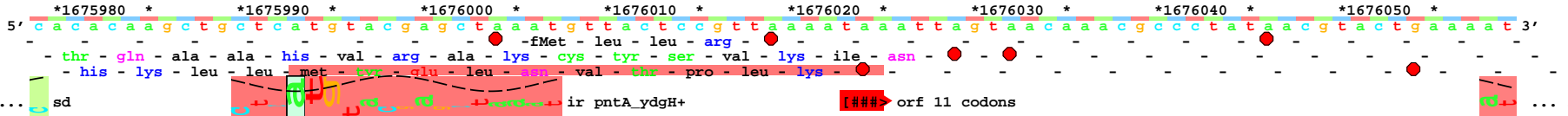
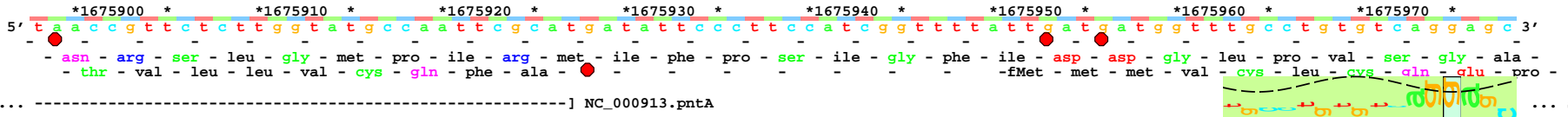


piece 1, NC_000913, pntA_ydgH+, config: linear, direction: +, begin: 1675898, end: 1676470



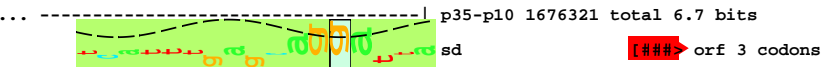
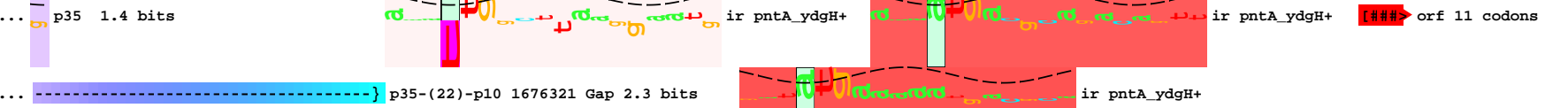
{----- ... p35-(22)-p10 1676321 Gap
----- ... p35-p10 1676321 total 6.7

*1676310 *1676320 *1676330 *1676340 *1676350 *1676360 *1676370 *1676380

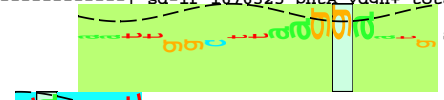
5' g g t c a t t t g a g c a g g a t t a a a a t t g g c t t a a g g a a t g t g a t a t g a a a a t g a c g c a g a c a g t t a c a c c g t t t a a a t g c a a t 3'

- - - -fMet - ser - arg - ile - lys - ile - gly - leu - arg - asn - val - ile - -fMet - thr - glu - thr - val - thr - pro - phe - lys - cys - met -

- ser - phe - glu - gln - asp - -fMet - lys - asp - ala - asp - ser - lys - thr - val - -fMet - gln -



sd-(8)-ir 1676325 Gap 2.4 bits
sd-ir 1676325 pntA_ydgH+ total 5.6 bits



p10 7.6 bits

sd-(9)-ir 1676344 Gap 2.3 bits



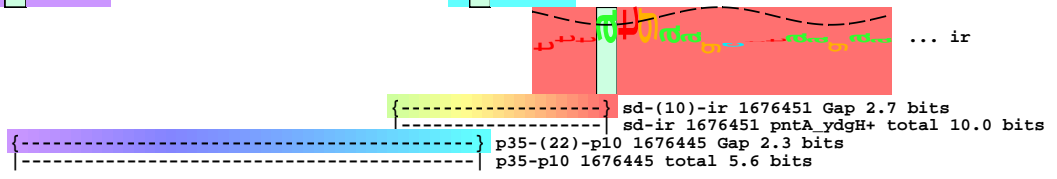
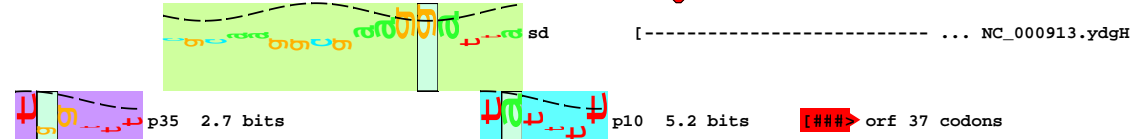
sd-ir 1676344 pntA_ydgH+ total 14.2 bits
sd-(16)-ir 1676351 Gap 6.4 bits
sd-ir 1676351 pntA_ydgH+ total 9.7 bits

*1676390 *1676400 *1676410 *1676420 *1676430 *1676440 *1676450 *1676460

5' a a t c a g c c a c g t t t c t c g t t a a t a a c a a t a c c a g t a c c t g g t t t g c g c a a g g c g a a g g a t t a t t t t t a t g a a g c t t a a g a a 3'

- - - -asn - glu - pro - arg - phe - ser - leu - ile - thr - ile - pro - val - pro - gly - leu - arg - lys - ala - lys - asp - tyr - phe - tyr - glu - ala - -

- - - -fMet - lys - leu - lys - met -



*1676470

5' c a c c c t 3'

- thr -

... NC_000913.ydgH

... ir pntA_ydgH+