

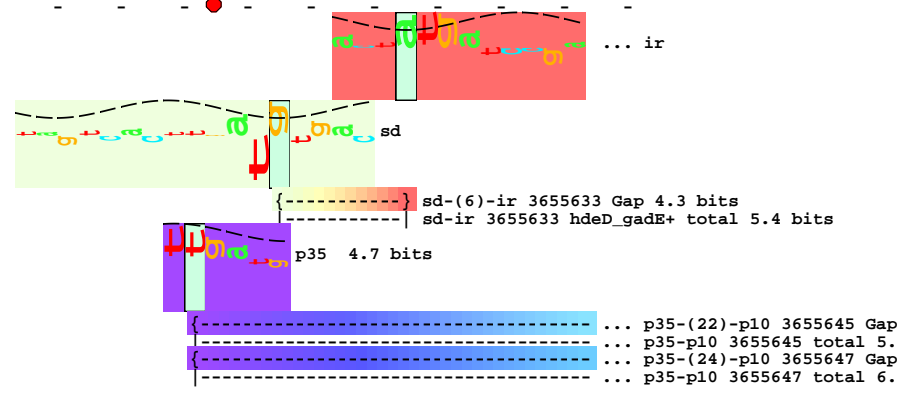
piece 1, NC_000913, hdeD_gadE+, config: linear, direction: +, begin: 3655561, end: 3655648

5' ^{*} t t c g c c a g t t t g t t c g t t a a g c a g c a a t a a t t a c c c g g t t g t c a c c c g g a t c a t a g t c a c t t g a t g t g a c t a t g a t c c g a 3' ^{*} 3655570 * 3655580 * 3655590 * 3655600 * 3655610 * 3655620 * 3655630 * 3655640

- phe - ala - ser - leu - phe - val - lys - gln - gln - fMet - ser - pro - gly - ser - fMet - thr - met - ile - arg -

- ser - pro - val - cys - ser - leu - ser - ser - asn - asn - tyr - pro - gly - cys - his - pro - asp - his - ser - his - leu - met -

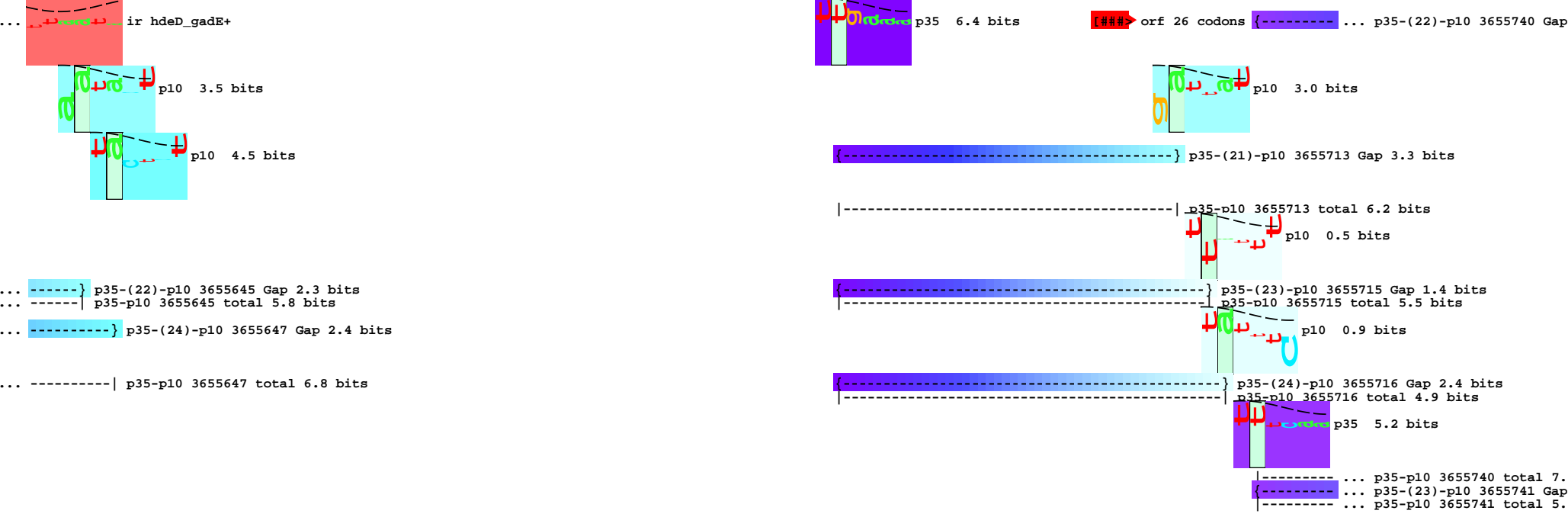
- arg - gln - phe - val - arg -



5' ^{*} t t a a t a c t c t c t c c g c t a c g c a g t g t t g t a g a t c a a t t g c g c a c t a t c a t t g a a a t a a a t t a c c t g c t a g t g a t t a t t t c a a 3' ^{*} 3655650 * 3655660 * 3655670 * 3655680 * 3655690 * 3655700 * 3655710 * 3655720

- leu - ile - leu - ser - pro - leu - arg - ser - val - val - asp - gln - leu - arg - thr - ile - ile - ile - glu - ile - ile - thr - cys - fMet - ile - ile - ser - thr -

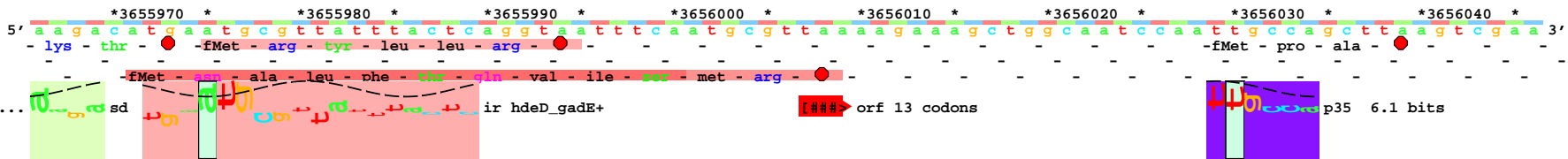
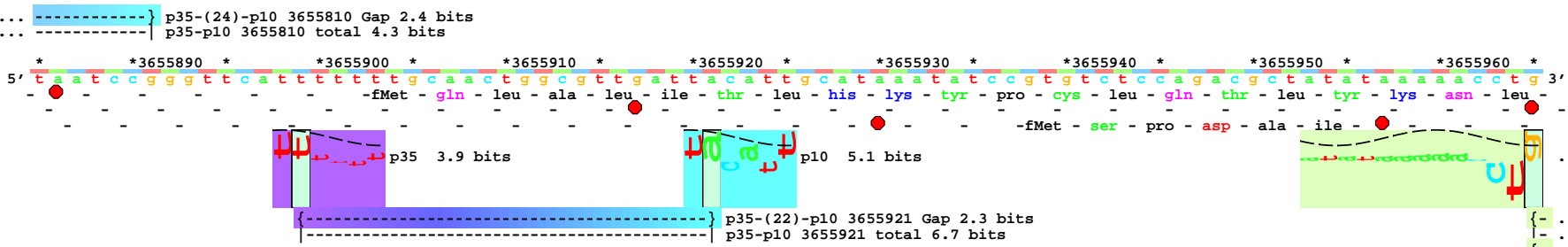
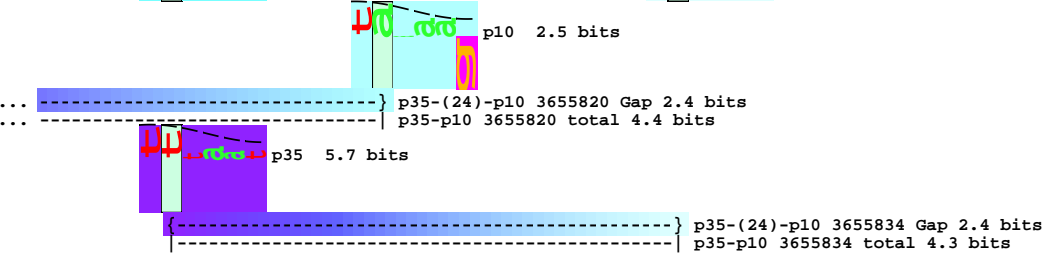
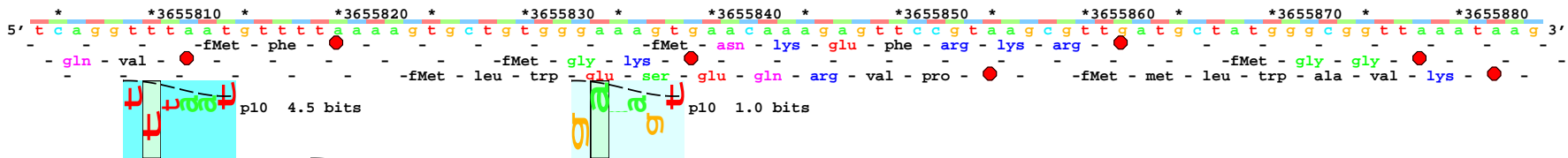
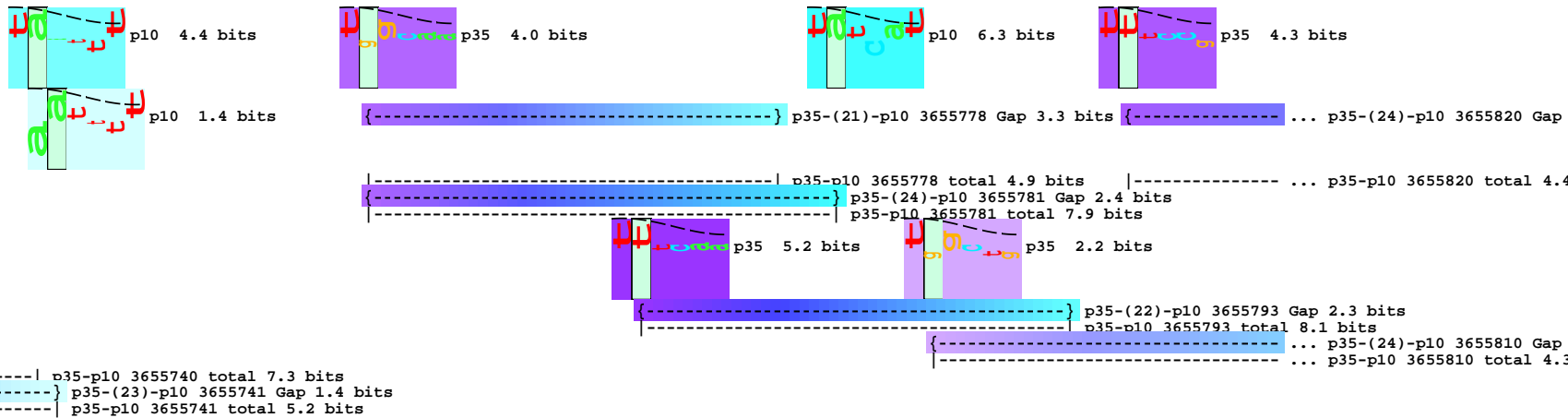
- fMet - leu -

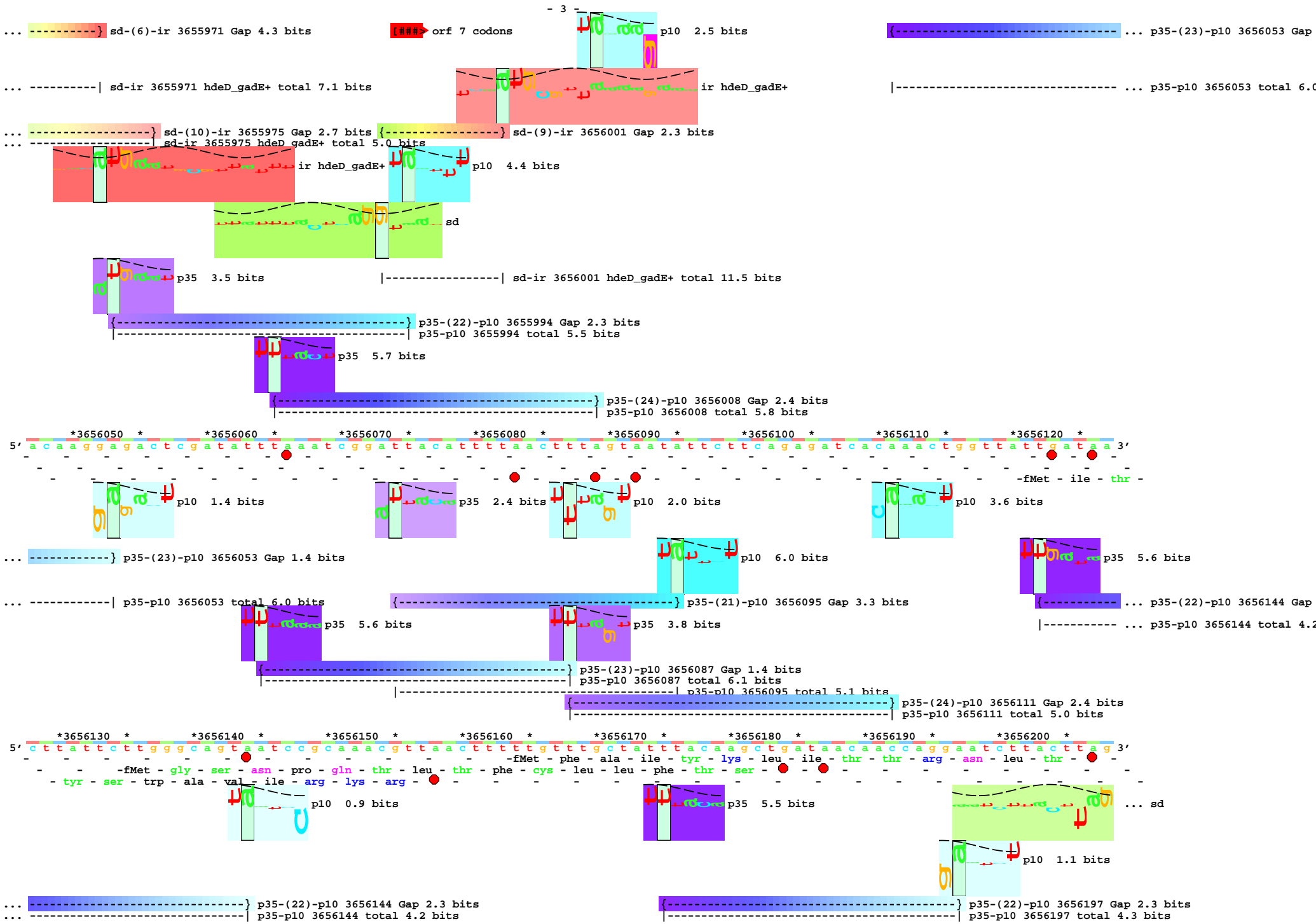


5' ^{*} c c t a c t g a a t t t c a t c t a a t t t t t t t c a c t c t a t g g c a a a t t a g c c a t t t t c a a a c a t t a t c a t g g c t g a t a t t t t c o g t a g 3' ^{*} 3655730 * 3655740 * 3655750 * 3655760 * 3655770 * 3655780 * 3655790 * 3655800

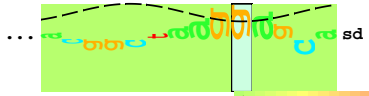
- tyr - fMet - ala - asn - fMet - ala - asp - ile - phe - arg - ser -











{-----} sd-(9)-ir 3656389 Gap 2.3 bits
|-----| sd-ir 3656389 hdeD_gadE+ total 12.5 bits