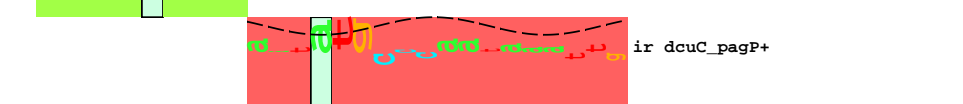
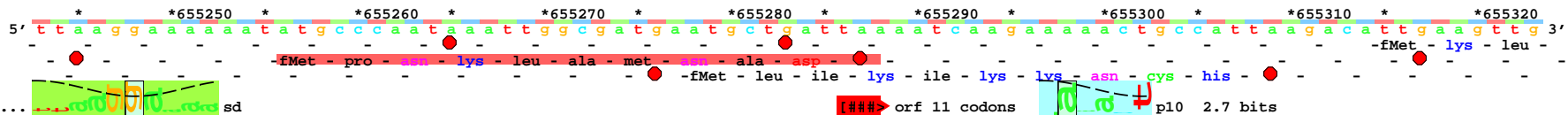
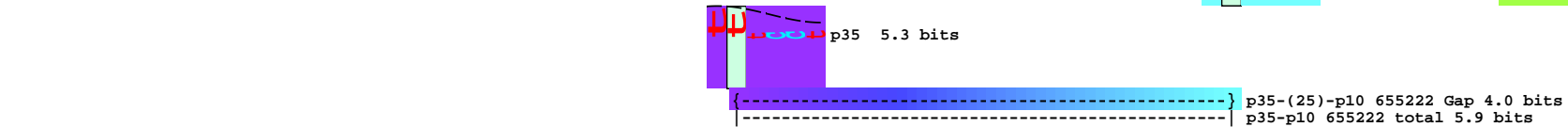
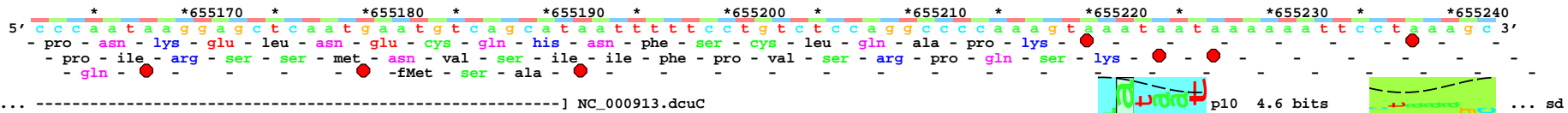


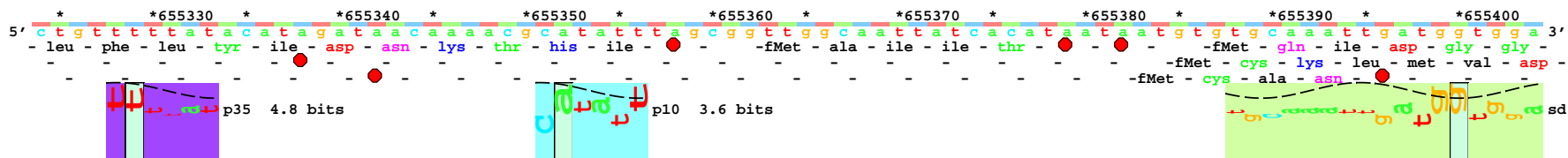
- 1 -

piece 1, NC_000913, dcuC_pagP+, config: linear, direction: +, begin: 655162, end: 655799



sd-ir 655256 dcuC_pagP+ total 15.7 bits

p35-(23)-p10 655298 Gap 1.4 bits
p35-p10 655298 total 4.7 bits



p35-(23)-p10 655352 Gap 1.4 bits

p35-p10 655352 total 7.0 bits

