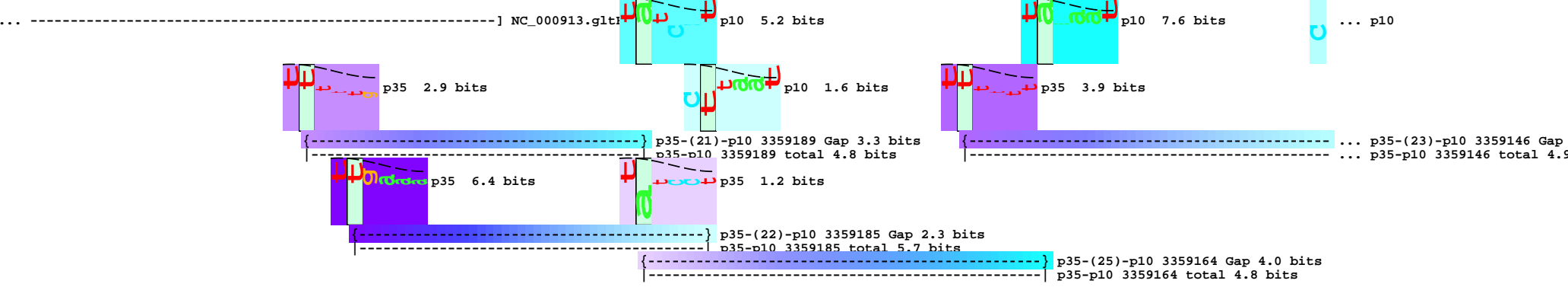
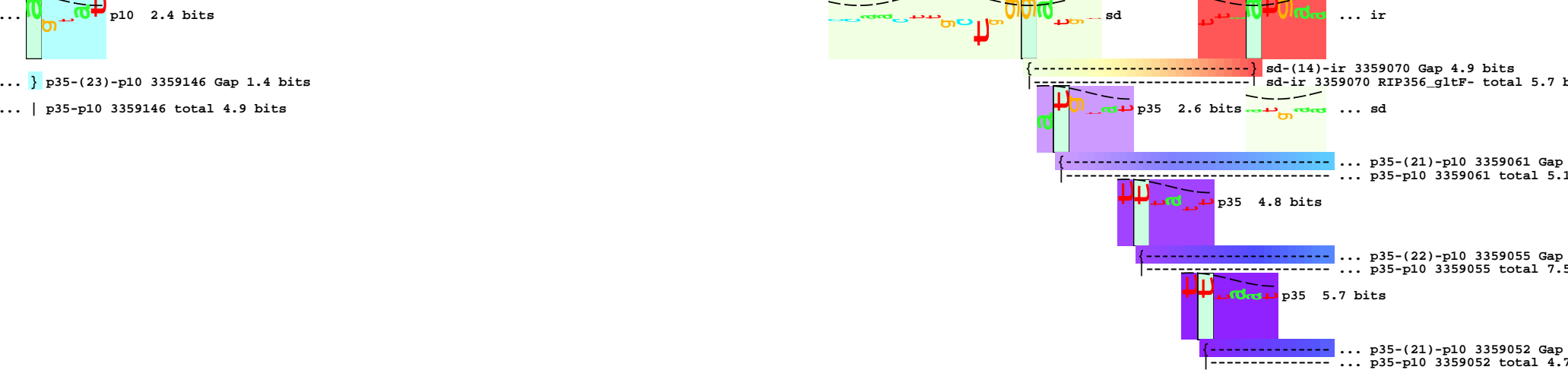


piece 1, NC\_000913, RIP356\_gltF-, config: linear, direction: -, begin: 3359227, end: 3358789

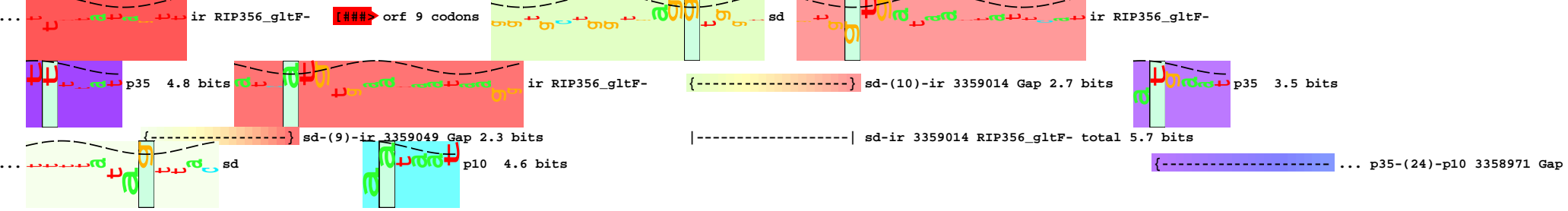
\* 3359220 \* 3359210 \* 3359200 \* 3359190 \* 3359180 \* 3359170 \* 3359160 \* 3359150  
 5' a g c t g t t g t g a g g t t c t t t t t g a a a a c a t a t g a a c a t a t c c t t a a t a a c a a a t t t a t t t t t t a a a a t a a a a g c t g a a g c 3'  
 - ser - cys - cys - glu - val - leu - phe - glu - lys - his - met - asn - ile - ser - leu - ile - thr - asn - leu - phe - phe - lys - ile - lys - ser -  
 - ala - val - val - arg - phe - phe - leu - lys - asn - ile -  
 - leu - leu -

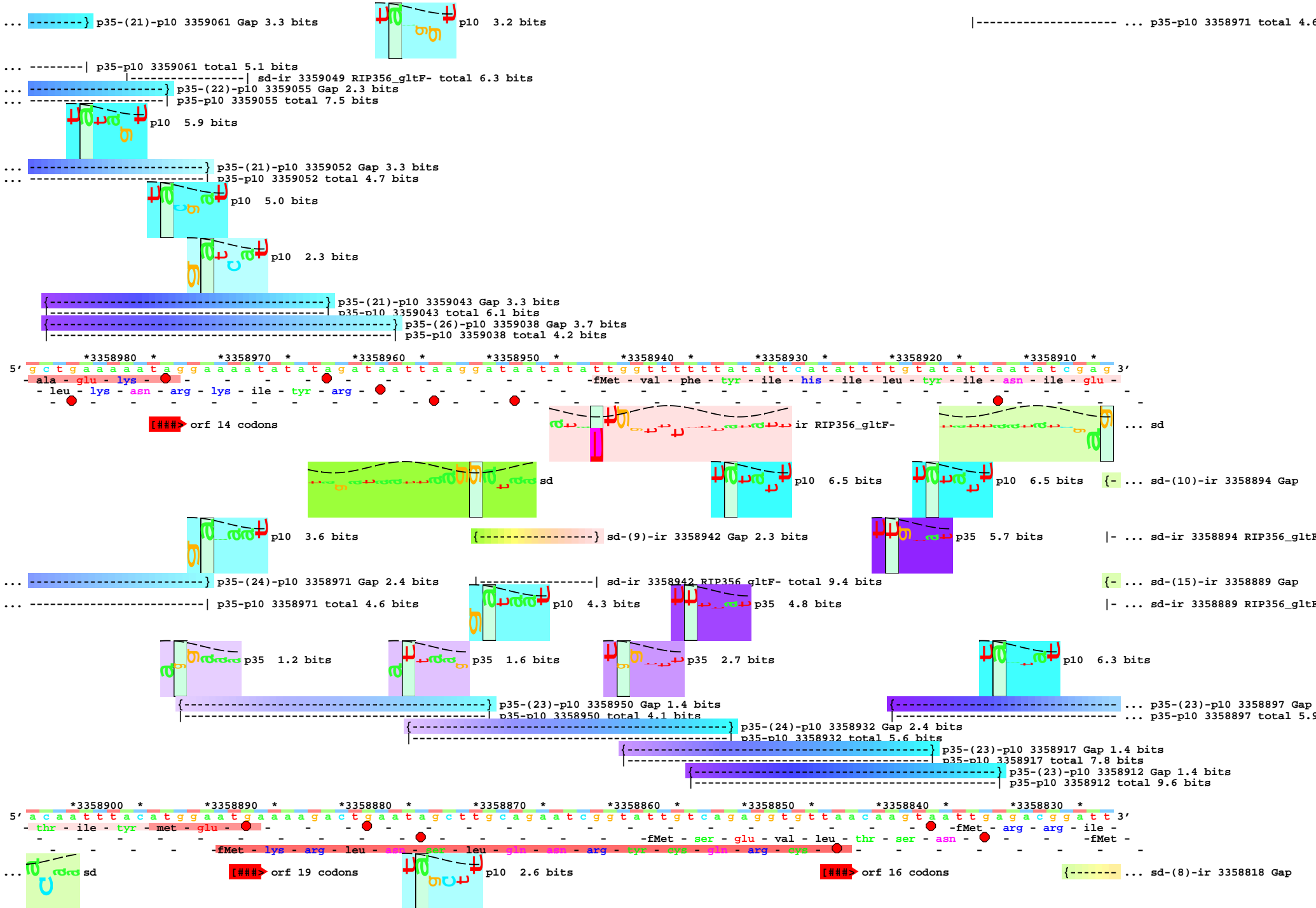


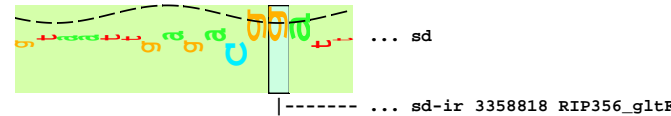
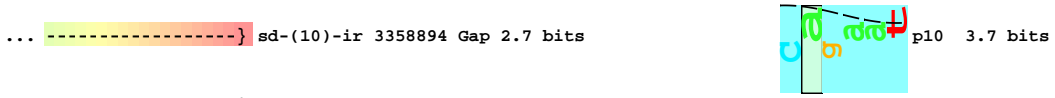
\* 3359140 \* 3359130 \* 3359120 \* 3359110 \* 3359100 \* 3359090 \* 3359080 \* 3359070  
 5' a g t a t a t a t a t c t g t t t g t g a a t g t a a a t a a a t a a c t c g t t c a g a a a t a g c c a a c t t g c t g g g a t g t a t t t a t t a t g a a 3'  
 -fMet -fMet -fMet -fMet -fMet - leu - gly - cys - ile - tyr - leu - met -  
 -fMet - asn - val - asn - lys -



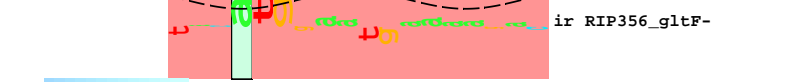
\* 3359060 \* 3359050 \* 3359040 \* 3359030 \* 3359020 \* 3359010 \* 3359000 \* 3358990 \*  
 5' t t t t a t a g t t a c g a t c a t g t g a a t a a a a g g t g c t g g t g a g g t g g t t t g t g g t g a t a a t t a t t c a t t a c a t g a a t g t t t g c 3'  
 - phe - tyr - ser - tyr - asp - his - val - asn - asn - lys - val - leu - val - arg - trp - phe - val - val - ile - ile - ile - his - tyr - met - asn - val - cys -  
 - phe - ile - val - thr - ile - met -fMet - val - cys - gly - asp - asn - tyr - ser - leu - his - glu - cys - leu - arg -



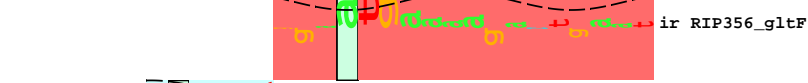




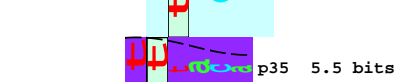
sd-ir 3358894 RIP356\_gltF- total 6.8 bits  
 sd-(15)-ir 3358889 Gap 6.0 bits  
 sd-ir 3358889 RIP356\_gltF- total 5.8 bits



p35-(23)-p10 3358897 Gap 1.4 bits  
 p35-p10 3358897 total 5.9 bits



p10 1.7 bits



p35-(24)-p10 3358874 Gap 2.4 bits  
 p35-p10 3358874 total 5.8 bits



p35-(25)-p10 3358867 Gap 4.0 bits  
 p35-p10 3358867 total 4.1 bits

\*3358820 \* \*3358810 \* \*3358800 \* \*3358790  
 5' g t a a a t g a g a a a t t g c t t g a t g t g c t t c a c t c a t 3'  
 - val - asn - glu - lys - leu - leu - asp - val - leu - his - ser -  
 - Met - arg - asn - cys - leu - met - cys - phe - thr - his -

sd-(8)-ir 3358818 Gap 2.4 bits



sd-ir 3358818 RIP356\_gltF- total 8.0 bits

