

# *In Service to Education*



**MIT Alumni Leadership Conference**  
9.25.21

**Dr. Claudia Urrea** (MAS PhD '07)  
*Senior Associate Director*  
*Abdul Latif Jameel World Education Lab (J-WEL)*



**J-WEL**

Abdul Latif Jameel World Education Lab

**Dr. Rohan Kundargi**

*K-12 Community Outreach Administrator*  
*Office of Government and Community Relations*



**Office of Government  
& Community Relations**

# MIT pK-12 Ecosystem

40+ Groups  
100+ Programs



Office of Government & Community Relations

# Cambridge K-12 Landscape



# Cambridge K-12 Landscape



Office of Government & Community Relations

# OGCR K-12 Philosophy

---



- Grow collaborations and **strengthen reciprocal partnerships** with local communities.
- **Provide equitable access** for youth to MIT Programs, Initiatives, Projects, and Events
- **Advance high-quality STEAM+ programming** that provides the opportunity to obtain & practice skills





**J-WEL**

Abdul Latif Jameel World Education Lab

## **Our Mission**

The mission of Abdul Latif Jameel World Education Lab is to spark a global education renaissance for all learners. With our collaborators, we leverage educational innovation, research, and effective practice to address learning needs and opportunities, developing solutions with global applicability.

# How we work

J-WEL works with member organizations – schools, colleges, companies, nongovernmental organizations (NGO's) and government agencies – to address challenges and opportunities that have the potential to transform education worldwide.

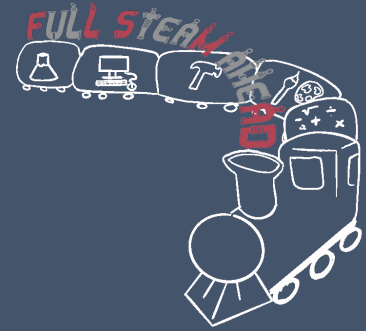
- **Membership** - fostering a global community of organizations that want to transform education. Members create their own future with inputs from the J-WEL community and the educational community at MIT.
- **Projects** - works together with organizations in the co-design and co-implementation of key projects that address worldwide needs.
- **Programs** - designing programs that serve the critical needs in education. For example, workshops, certifications, etc.
- **Grants/research** - inviting MIT faculty to propose innovations and educational research that will impact MIT education, with broad potential for impact in global settings.



**J-WEL**

Abdul Latif Jameel World Education Lab

# MIT Full STEAM Ahead, Mission

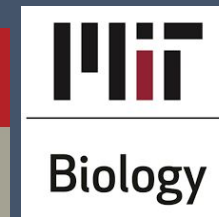
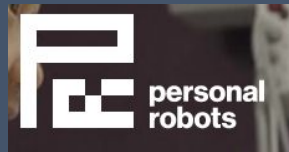


Our mission is to create and share high quality resources to facilitate digital and non-digital learning for K-12 and lifelong learners. By providing science, technology, engineering, arts, and mathematics (STEAM) based curriculum and outreach programs, we aim to inspire a diverse global community of educators, students, and parents to find innovative and humanistic solutions to the challenges of learning at a distance.

[fullsteam.mit.edu](http://fullsteam.mit.edu)



# MIT Full STEAM Ahead – MIT Community





## Fall STEAM Program

10 week High School Program  
6 Staff Members & 5 Coordinators  
53 College Mentors from 32 Universities  
600 Students from Spain  
57 Massachusetts Students  
22 Guest Speakers

- 2021 -

## Continuing into Year 2

### Summer STEAM Program

3-Week Session  
4 Staff Members & 1 Coordinator  
6 College Student Mentors  
70 Middle School Students from  
30 Massachusetts towns  
5 Guest Speakers

## - 2020 - Year 1 Journey

### Weekly Packages

12 Weekly Themed Packages  
March – May  
Activities for All ages  
8 Core Volunteer Staff  
3 MIT Student Helpers  
14 MIT DLCs involved

### Summer STEAM Program

Two 3-Week Sessions  
6 Staff Members & 2 Coordinators  
33 MIT Student Mentors  
340 Middle School Students from 47  
Massachusetts towns  
4 Guest Speakers



Fall  
International Program

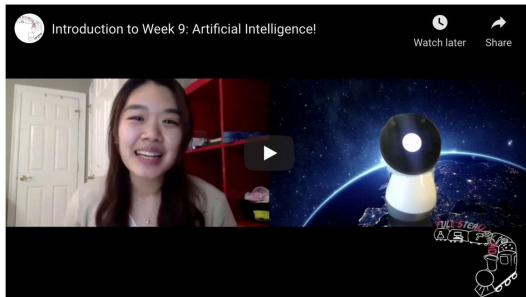


# Weekly Packages

## Week 3 Package: Exploring and Living in Outer Space!



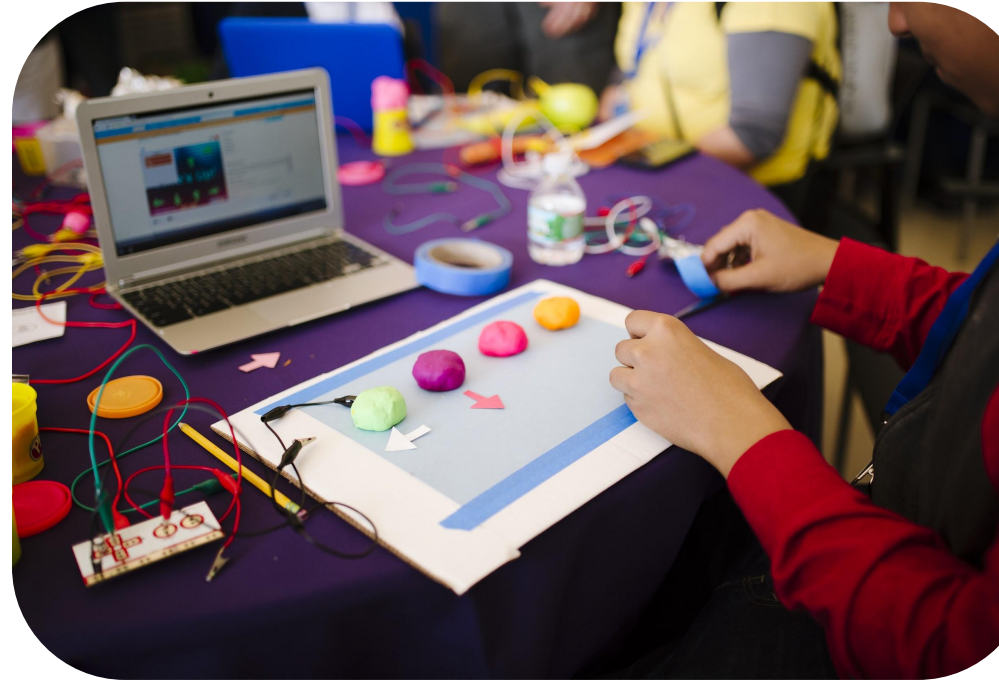
## Week 9 Package: Artificial Intelligence!



Week	Topics
1	Spread of Disease
2	Stepping Into Invention Education
3	<i>Exploring and Living In Outer Space!</i>
4	Making Music and Sounds
5	The World Around Us
6	Inventing Matters!
7	Reveal! Discovering Science Through Compelling Images
8	Making Music and Sounds Part 2
9	<i>Artificial Intelligence!</i>
10	Learning Creative Learning

# Beyond the FSA program

- Build on the MIT pK-12 ecosystem and help improve MIT pK-12 programs
- Serve young learners within local communities and schools
- Engage in international collaboration (e.g. Spain)
- Generate curriculum and programming for future programs



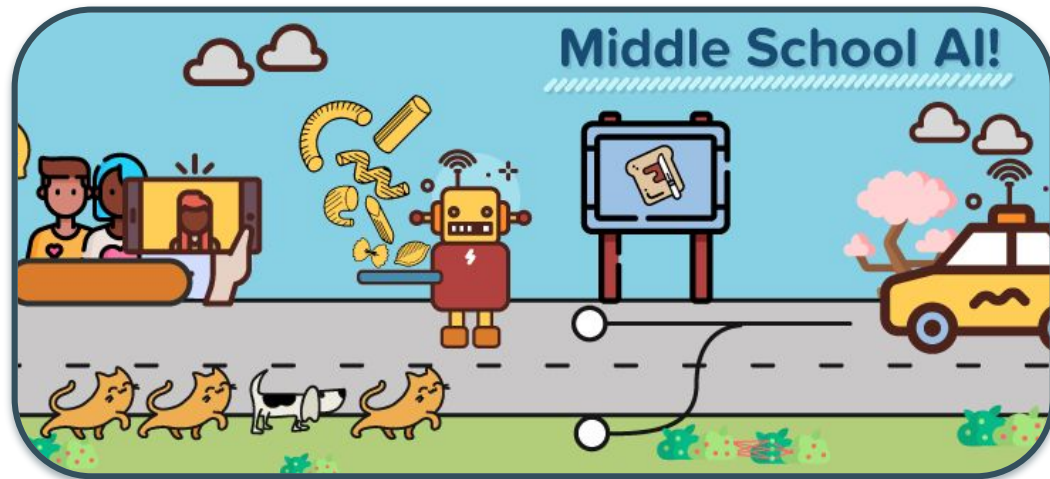
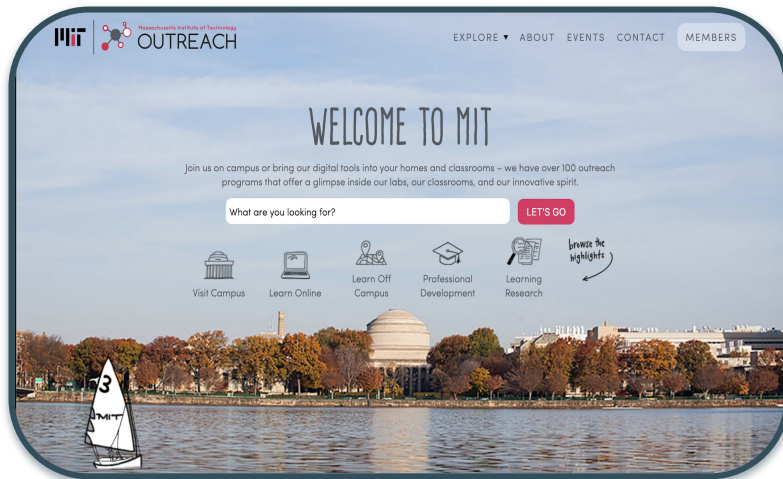
# Join Us!

**Sign up** for the newsletter @ [pK12.mit.edu](https://pK12.mit.edu)

**Donate** to the MIT pK-12 Ecosystem - [tinyurl.com/MITpk12give](https://tinyurl.com/MITpk12give)

**Share** curriculum and activities with your local communities

**Collaborate** with MIT pK-12 organizations via the Alumni Association!



**J-WEL**

Abdul Latif Jameel World Education Lab



Office of Government  
& Community Relations

Questions?



# MIT PK-12





# Belize STEAM Lab School

MIT is committed to making the world a better place; our engagement in Belize through the Ministry of Education, Youth, Sports & Culture (MoEYSC) allows us to work together to improve Belizean education through the new STEAM Lab School.



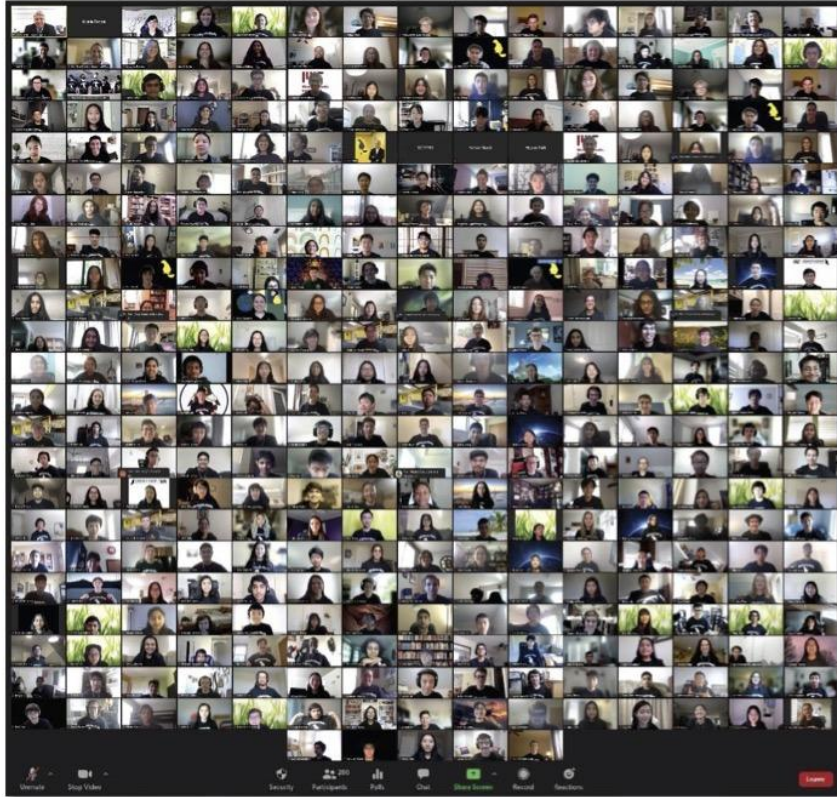
**J-WEL**  
Abdul Latif Jameel World Education Lab





# MIT Beaver Works Summer Institute 2021

4-week virtual program for high school students (5 July – 1 August 2021)



- **Four-week virtual STEM program for talented High School rising seniors**
  - 351 students from 195 schools (29 states)\*
  - 152 female students (43%)
- **Started in 2016, 13 hands-on, intensive project-based challenges in 2021**
  - Autonomous RACECAR Grand Prix
  - Autonomous Cognitive Assistant
  - Autonomous Air Vehicle Racing
  - Autonomous Underwater Vehicles Challenge
  - Build a CubeSat
  - Unmanned Air System – Synthetic Aperture Radar
  - Data Science for Health and Medicine
  - Remote Sensing for Disaster Response
  - Serious Game Design and Development with AI
  - Assistive Technology
  - Embedded Security and Hardware Hacking
  - Cyber Security for SW Intensive Systems
  - Quantum Software
- **Women’s Networking Dinner and 3 DEI in STEM Workshops**
- **In-person programs at Huntsville, AL and Kwajalein\*\***
- **Live webcasted final event – over 8k viewers**



**BWSI – Huntsville, AL**



**BWSI – Kwajalein**

## What we do...

- [The Lemelson-MIT Program](#) is a national leader in invention education
- Inspire youth to invent solutions to real-world problems
- Provide suite of educational STEAM offerings

## What we can do together...

- Mentor youth working on invention projects
- Sponsor invention events w/ local companies
- Be guest speakers in LMIT courses and events

Contact us at [info-lemelson@mit.edu](mailto:info-lemelson@mit.edu)



*Sisters With A Dream* students from Fletcher-Maynard Academy met with Dr. Shirley Ann Jackson in F18.

# Wouldn't it be great if more kids took STEM classes in high school?

Get kids doing digital fabrication, coding, electronics, and prototyping, and watch them get good at problem-solving, collaboration, experimentation and communication!

Making is a practice any teacher can use to empower students in any subject.

Kids need it now!

Let us help you bring creative experiential learning to your school district.

Check out [k12maker.mit.edu](https://k12maker.mit.edu) to:

- **Set up a school Makerspace**
- **Choose the tools** best for you
- **Train students and staff**
- **Explore Maker projects** for academic classes
- **Pitch a Maker initiative** in your school

Contact us at [edgerton-k12-maker@mit.edu](mailto:edgerton-k12-maker@mit.edu)



The Edgerton Center has been a home for experiential learning at MIT for decades, embodying the “Mens et Manus” motto that becomes a lifelong philosophy for MIT grads. Learn more about our Clubs and Teams, High-Speed Imaging, and other K-12 Outreach opportunities at [edgerton.mit.edu](https://edgerton.mit.edu)